



**DEVELOPING AND OPERATIONALIZATION
OF MEL
OF MULTI-SECTORAL NUTRITION ACTION PLAN**

NIPN GLOBAL GATHERING 2021

25TH March 2021



OUTLINE

- 1. Introduction**
- 2. MEL of the NMNAP I**
- 3. The Development Processes**
- 4. Tools used in MEL**
- 5. CRRAF**
- 6. Scorecard**
- 7. Lesson Learnt**
- 8. Challenges**



Preamble

- **Tanzania Food and Nutrition Centre (TFNC) is** an institution under the **Ministry for Health.**
- Established by an **Act of the Parliament.**
- Its main function is to **coordinate, guide and catalyze food** and nutrition interventions to prevent and control all forms of malnutrition.
- Currently operates in 4 Core Departments: **Policy and Planning, Community Health and Nutrition; Nutrition Education and Training** and **Food Science and Nutrition.**
- The Centre also hosts a **Laboratory to** facilitate analysis of biomarkers and food sample analysis.



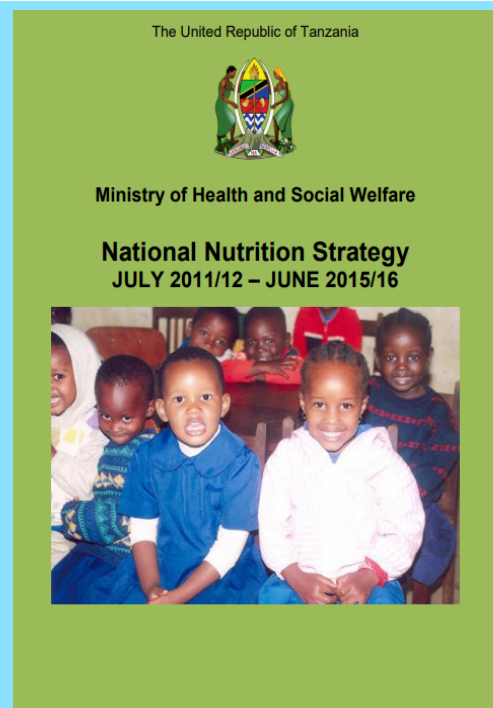
1. Introduction

□ For the past 10 Years Tanzania, 2 National Nutrition Action Plans were implemented.

■ **NNS: A strategy and IP**

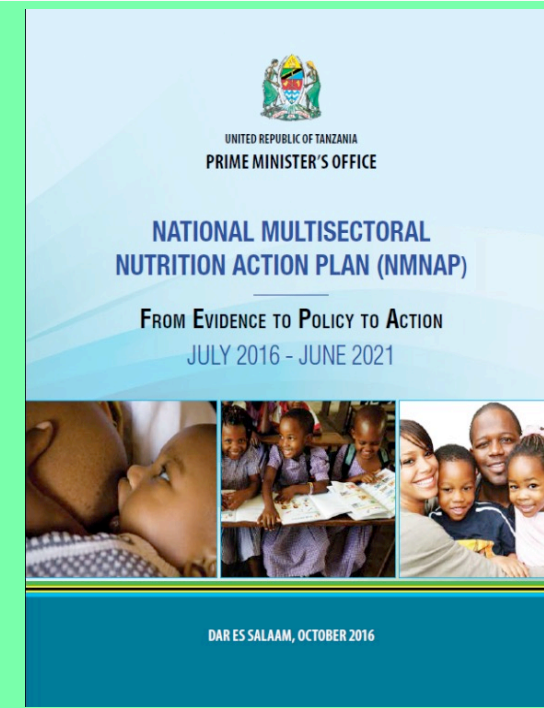
The IP contains M&E framework with 3 Levels of results

■ Results were in-terms of **strategies, strategic objectives and outputs**



2011/12 – 2015/16

- **NMNAP:**
- A 3 in 1 Plan***
- ✓ **One plan;**
- ✓ **One coordinating mechanism**
- ✓ **One M&E framework**
- **NMNAP: Results along 7 KRA**



2016/17 – 2020/21



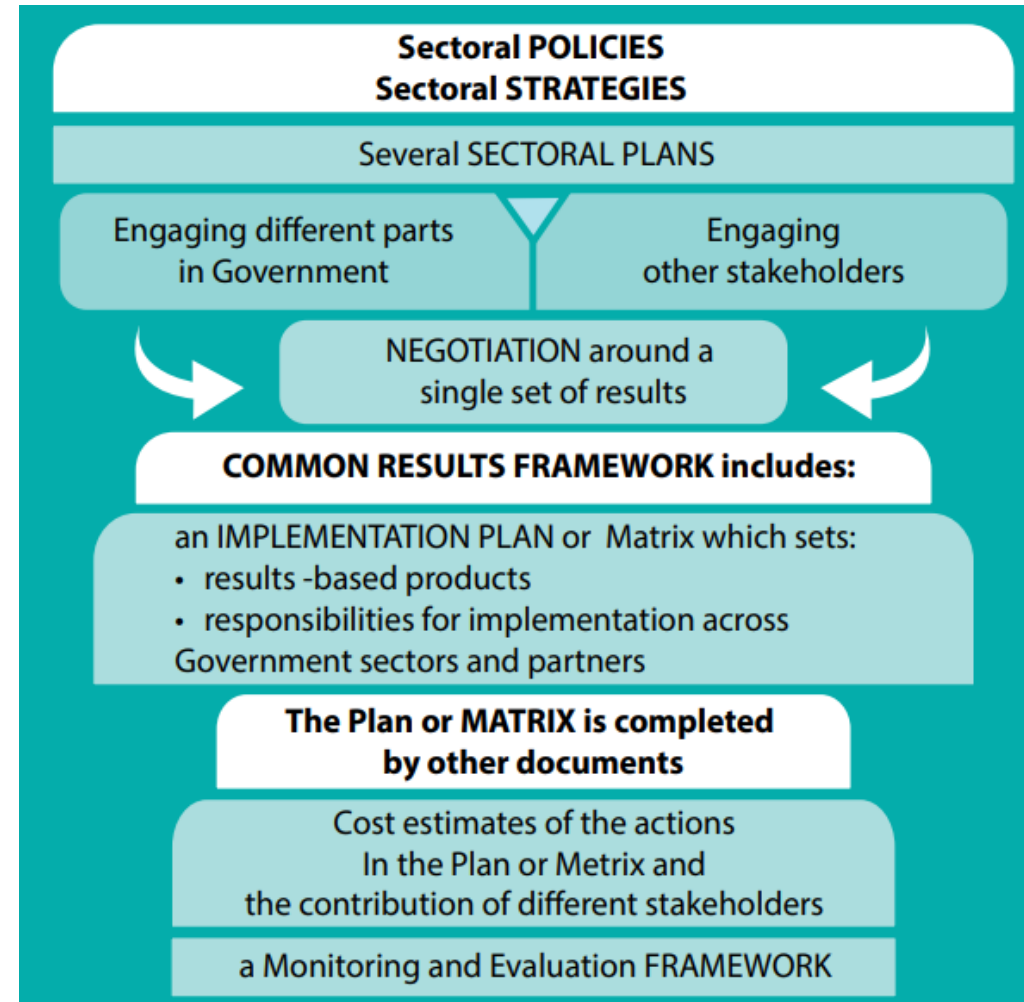
1. Introduction of MEL of NMNAP I

- MEL is an important tool to **facilitate tracking and evaluation** of performance according to the targets set and serves as **accountability and learning framework** of the NMNAP I.
- **Key Features of the MEL:**
 - ✓ **Common Results (i.e. improvement of nutrition status of Tanzanians)** that can only be achieved through synergetic action among different actors and sectors.
 - ✓ The pathway of results: i.e. from **Outputs** to **Outcomes** to **Impact**.
 - ✓ Contains **Indicators** to measure the progress towards the achievement of results at the output, outcome and impact level
 - ✓ Entails **Responsibilities** of implementing structures (i.e. ministries, departments, agencies, LGAs, NGOs, Private Sector institutions)
 - ✓ The **Resources** needed to achieve the each output, outcome and impact.



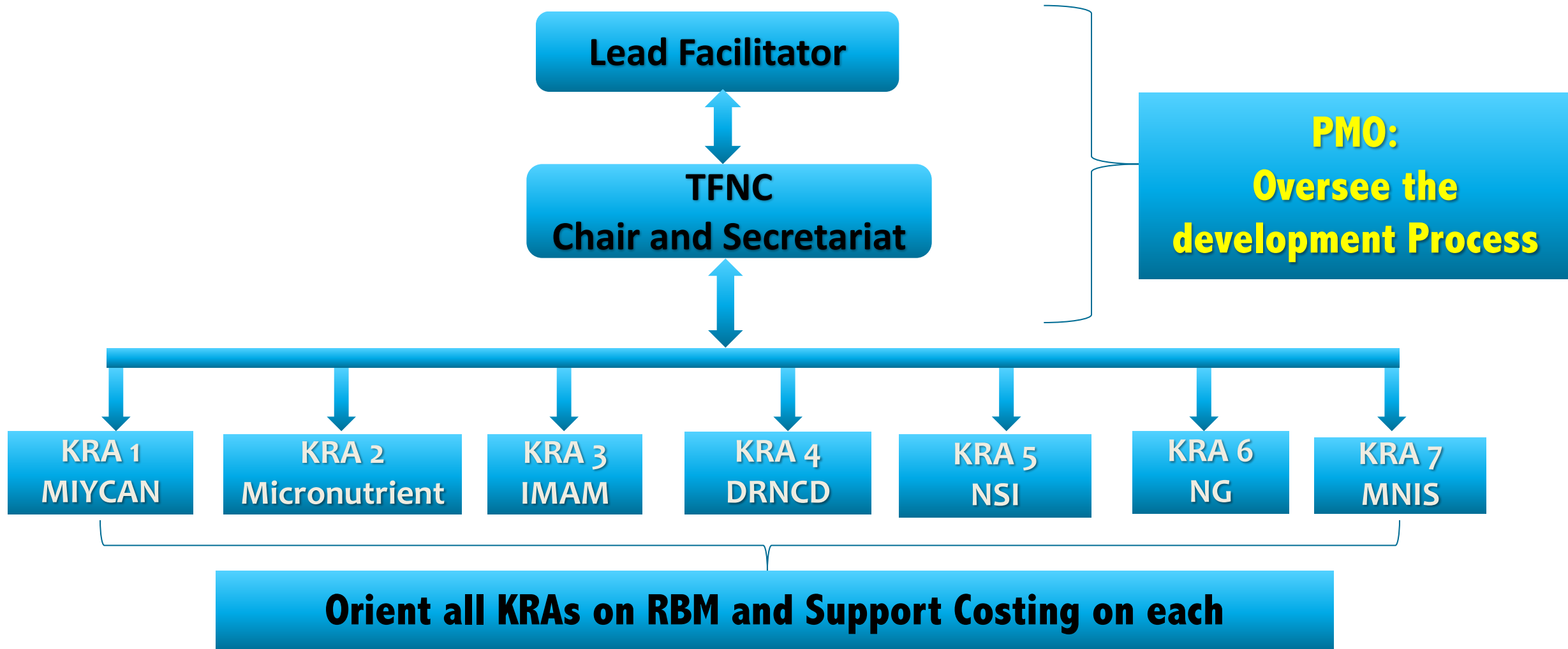
2. MEL of the NMNAP I

- ❑ The MEL of the NMNAP I adopted common Results Framework of SUN Movement.
- ❑ It incorporates accountability, results and funding in one framework.
- ❑ Builds evidence base for decision making and enhances on documentation of best practices and learning.
- ❑ It uses: **Annual reviews, BNA and AWP, periodic reviews;** and **National Surveys.**





3. The Development Processes





5. Common Results, Resources and Accountability Framework (CRRAF)

Planned:
Expected results using pre-defined targets

Achieved:
Recorded annually; MT and End -line

Area	Expected Results	Indicators	Baseline Value (year)		Annual Targets for each Indicators	Cumulative Funding Requirements (TZS)	Lead	Collaborating Agencies
	Impact			Planned				
				Achieved				
Nutrition Specific programmes	Outcome 1			Planned				
				Achieved				
	Output 1.1			Planned				
				Achieved				
Nutrition Sensitive programmes	Outcome 2.			Planned				
				Achieved				
	Output 2.1			Planned				
				Achieved				
Enabling environment	Outcome 3			Planned				
	Output 3.1							
				Achieved				
Total				Planned				
				Achieved				

Key component of CRAFF which will be harmonized with Scorecard



6. Scorecard

Action Tracker

Zambia • Malaria Control and Elimination • Q3/2017 •

Action items for Zambia : Malaria Control and Elimination

Legend:
■ Action achieved ■ No progress
■ Some progress Deliverable not yet due

Region	Category	Action description	Date created	Deadline	Status	Status explanation	Owner	Stakeholder / collaborators	Order of priority	Comments
Zambia	SMEOR	To establish the Surveillance and response system based on the stratification of high, moderate and low in order to institute appropriate action for each strata by district	Jun 30, 2017	Aug 30, 2017	Deliverable not yet due		Busiku	Japhet, MACEPA, WHO	0	
Zambia	M&E	To ensure the scorecard is update for Q1, Q2 2017	Jun 30, 2017	Jul 29, 2017	Some progress		Mercy	Japhet, M&E MOH, M&E SF	0	
Zambia	SMEOR	Update Scorecard with additional indicators on Stockouts of RDTs and ACTs	Jul 21, 2017		No progress		Japhet Chiwaula (NMEP)	Mercy	0	

Mobile Notifications



MN Scorecard

Malaria Control and Elimination: Zambia (T2/2017)

National Indicators

Carte de score

Region	Vector Control		Case management			Surveillance M&E				
	% US children receiving LLIN through EPI	% of Pregnant women receiving LLIN through ANC	% pregnant women that receive >= 3 doses of IPTp through ANC	% cases treated with an antimalarial in public facility	% suspected cases tested by public facilities	Malaria test positivity rate	Malaria Incidence Rate	Case Fatality Rate	% of facilities with complete reporting	Timeliness of reporting
Zambia	↓19%	33%	53%	99%	96%	59%	125	1%	91%	60%
Central	↓4%	22%	51%	99%	96%	59%	155	3%	97%	91%
Copperbelt	↓12%	25%	59%	98%	93%	52%	106	3%	94%	↓60%
Eastern	↓40%	59%	54%	97%	95%	59%	245	2%	95%	↓60%
Lusaka	↓11%	6%	53%	92%	93%	28%	16	1%	↑90%	↑74%
Luapula	↓35%	55%	52%	97%	↑89%	67%	167	2%	↑85%	57%
Muchinga	↓40%	55%	51%	97%	92%	65%	158	1%	↑84%	49%
Northern	↓47%	63%	47%	100%	95%	67%	162	2%	94%	↑67%
North Western	↓22%	51%	55%	98%	96%	64%	↑211	1%	87%	↓49%
Southern	↓3%	9%	56%	100%	100%	22%	9	2%	88%	↓49%
Western	↓2%	10%	46%	100%	100%	62%	206	4%	88%	↓49%

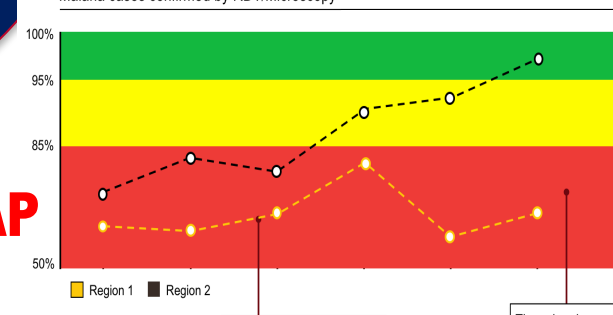
Workplan Manager

Workplan test

Objective	Description
100% vector control	Organise campaign for LLINs
100% vector control	Procure LLINs

Data Visualization

Malaria cases confirmed by RDT/Microscopy



One of the key tool for MEL of the NMNAP



7. Lesson Learnt

- ❑ MEL framework provides a clear, transparent and regular tracking system with learning component.
- ❑ Demands for strengthening data generation and use through routine information systems and national surveys.

Regularly provide evidence for decision making and action

- ❑ With MEL, various sectors are brought together, around concrete interventions, expected results and funding commitments.
- ❑ Generate accountability towards the achievement of results and compliance with financial commitments and desired results.



8. Challenges

Capacity building

- Inadequate capacity in development, managing and use of MEL.
- The use of routine data systems as key component of MEL.
- Inconsistencies in data collection for the proposed indicators in the MEL at various levels.

Human Resource

- Indicators allocated/used in multi-sectoral MEL are originated from various sectors, hence enough HR is important.

Infrastructure

- Inadequate ICT equipment's at sub-regional level; anthropometric equipment's at facilities and for outreach services.
- Harmonization of MEL tool between various implementing partners at various levels.
- Variability in estimation of denominators for some indicators at sub-regional level.

Finance

- Variability in timelines of collecting data for sectoral indicators.
- Strengthen the use of scorecard and action tracker at all levels in routine management meetings and partner meetings.



Thank you!

